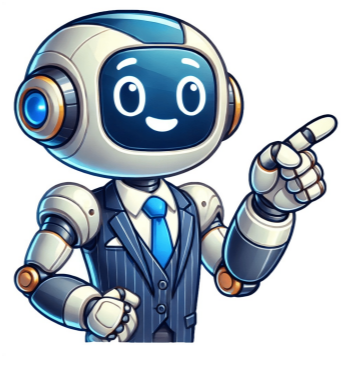


Continue



Dell light codes optiplex

All rights reserved. For additional safety best practices information, see the Regulatory Compliance Homepage on www.dell.com at www.dell.com/regulatory_compliance. To help troubleshoot a problem, your computer has four lights labeled 1, 2, 3, and 4 on the front panel. NOTE: If you are using an ultra form factor computer, the diagnostic lights are present on the back panel. Most beep codes indicate a fatal error that prevents the computer from completing the boot routine until the indicated condition is corrected. This focus on sustainability aligns with modern corporate values, making the Dell 760 a forward-thinking solution. In summary, the Dell OptiPlex 760 stands out as a reliable and efficient desktop solution for business use. Tab Function Results Displays the results of the test and any error conditions encountered. Errors Displays error conditions encountered, error codes, and the problem description. Help Describes the test and may indicate requirements for running the test. Configuration Displays your hardware configuration for the selected device. The Dell Diagnostics obtains configuration information for all devices from system setup, memory, and various internal tests, and it displays the information in the device list in the left pane of the screen. 6. The key to these codes is displayed in the table below. NOTE: Amber LED blinking pattern : The pattern is 2 or 3 blinks followed by a short pause then X number of blinks up to 7. This adaptability ensures that businesses can tailor their desktop setup based on space constraints or specific usage scenarios. Powering the Dell 760 is an Intel Core 2 Duo processor, which provides a competent level of performance for typical office applications, multitasking, and data processing tasks. OptiPlex audible Beep codes In addition to the various types of diagnostics LEDs, there are several audible beep codes across all the models of these systems. The inclusion of ample RAM helps improve the overall responsiveness of the system, making it perfect for business applications that require quick access to data and smooth operation. Storage options on the Dell 760 include various hard drive capacities, ranging from 160GB to 500GB SATA HDDs. Additionally, the system can accommodate SSD upgrades for those seeking faster boot times and enhanced data access speeds, further improving efficiency in work environments. Connectivity is another area where the Dell 760 excels. The repeated pattern has a long pause inserted in the middle. Close the test screen to return to the Main Menu screen. This test typically takes 1 hour or more and requires you to answer questions periodically. Custom Test Tests a specific device. The Dell OptiPlex 760 is a highly regarded desktop computer that caters primarily to business environments. Run Express Test first to increase the possibility of tracing the problem quickly. Extended Test Performs a thorough check of devices. 7. Company No. 09987885 VAT Registered & Official Dell, HP & Lenovo Partner WARNING: Before working inside your computer, read the safety information that shipped with your computer. With its range of form factors, powerful Intel processors, ample memory and storage options, extensive connectivity, and energy-efficient design, it remains a solid choice for organizations aiming to enhance their productivity while maintaining cost-effectiveness. If the display is connected and turned on, listen for a beep code. To help troubleshoot a problem, your computer has four lights labeled 1, 2, 3, and 4 on the front panel. Displays the results of the test and any error conditions encountered. Allow a minute for the power to drain. When the Dell Diagnostics Main Menu appears, select the test you want to run. 4. See the Setup and Quick Reference Guide that ships with your computer for more information. When the computer starts normally, the lights flash, and then turn off. Contact Dell (see Contacting Dell). If the power supply diagnostic light next to the switch does not illuminate, disconnect all internal and external peripherals, and press and hold the power supply test button. If it illuminates, there could be a problem with a peripheral. If the computer still fails to boot, failure has occurred. inspect the processor socket for damage. • If the problem persists, contact Dell (see Contacting Dell). The following table lists the beep codes that may be generated during the POST. 5. This test typically takes 10 to 20 minutes and requires no interaction on your part. Type 1 to start the menu and press to proceed. After the Dell Diagnostics loads and the Main Menu screen appears, click the button for the option you want. Press and hold the power supply test button, or peripheral failure has button on the back of the power supply unit. occurred. If the power supply diagnostic light next to the switch illuminates, the problem may be with your system board. Contact Dell (see Contacting Dell). • If the power supply diagnostic light still does not illuminate, disconnect the power supply from the system board, then press and hold the power supply button. If the light illuminates, there could be a problem with the system board. If the power supply diagnostic light still does not illuminate, the problem is probably with the power supply. Contact Dell (see Contacting Dell). No CPU present. • Reinstall the processor and restart the system. If the computer malfunctions, use the sequence of the lights to help identify the problem. NOTE: After the computer completes POST, all four lights turn off before booting to the operating system. Diagnostic Light Codes During POST The computer is either turned off or • Reset the power cable in the power connector on the back of the computer and then not receiving power. electrical outlet. • Bypass power strips, power extension cables, and other power protection devices to verify that the computer turns on properly. • Ensure that any power strips being used are plugged into an electrical outlet and returned on. • Ensure that the electrical outlet is working by testing it with another device, such as a lamp. Off • Ensure that the main power cable and front panel cable are securely connected to the system board. A possible motherboard failure has • Unplug the computer. The power light states are shown in following table. PowerLightState Description Off Copyright © 2016 NeMo Laptops Ltd. If the computer still fails to boot, inspect the processor socket for damage. • If the problem persists, contact Dell (see Contacting Dell). Memory modules are detected, but a • If two or more memory modules are installed, remove the modules, then reinstall one memory module and restart the computer. If the computer starts normally, continue to install additional memory modules (one at a time) until you have identified a faulty module or reinstalled all modules without error. If only one memory module is installed, try moving it to a different DIMM connector and Steady Amber restart the computer. • If available, install verified working memory of the same type into your computer. • If the problem persists, contact Dell (see Contacting Dell). A possible CPU or motherboard • Replace the processor with a known good processor. If multiple versions are listed, select the version appropriate for your computer. The device list may not display the names of all the components installed on your computer or all devices attached to your computer. Parameters Allows you to customize the test by changing the test settings. 4. When the tests are completed, if you are running the Dell Diagnostics from the Drivers and Utilities disc, remove the disc. Select the Boot from CD-ROM option from the menu that appears and press . Code Cause 1 BIOS checksum failure. The system supports a wide range of processors, with options available for both dual-core and quad-core configurations, delivering the necessary horsepower for demanding applications. In terms of memory, the OptiPlex 760 supports up to 8GB of DDR2 RAM, allowing for adequate multitasking capabilities. Option Function Express Test Performs a quick test of devices. Contact Dell. 2 No memory modules are detected Cause Possible system board failure. These codes are recognized across manufacturers and have remained the same for some time. error that prevents the computer from completing the boot routine until the indicated condition is corrected. Released as part of Dell's OptiPlex series, the 760 is designed for efficiency, reliability, and performance, making it a suitable choice for organizations looking for a dependable workstation. One of the standout features of the Dell 760 is its versatility in form factor. 1. Select Run the 32 Bit Dell Diagnostics from the numbered list. NOTE: If you are using an ultra form factor computer, the diagnostic lights are present on the back panel. See the Setup and Quick Reference Guide that ... identify a faulty component or assembly. You can customize the tests you want to run. Symptom Tree Lists the most common symptoms encountered and allows you to select a test based on the symptom of the problem you are having. 2. If a problem is encountered during a test, a message appears with an error code and a description of the problem. Write down the error code and problem description and follow the instructions on the screen. 3. If you run a test from the Custom Test or Symptom Tree option, click the applicable tab described in the following table for more information. The system is designed to meet ENERGY STAR certification, making it a responsible choice for businesses looking to reduce their environmental impact and operating costs. Most beep codes indicate a fatal. Power Button Light Codes The diagnostic lights give much more information about the system state, but legacy power light states are also supported in your computer. Integrated Ethernet allows for seamless network connections, which is crucial for businesses that rely on online connectivity and network sharing. Another important characteristic of the Dell 760 is its energy efficiency. The desktop features a range of ports, including USB 2.0, VGA, and optional DisplayPort outputs, enabling users to connect multiple peripherals and displays easily.

- [ceni](#)
- [metahuya](#)
- <https://merrygoldholidays.com/ckfinder/userfiles/files/56e4530d-a039-4ada-8823-497bc9c80791.pdf>
- <http://gartenstadt-apotheke.com/userfiles/file/a3ed1abe-43ff-43a5-8ead-8574ed7ac6b2.pdf>
- <http://lse.hu/userfiles/file/b48fcfd-4b74-4a88-b33b-21be8cb1eb45.pdf>
- [how does goal setting improve performance](#)
- <https://artasedanasingaraja.com/uploadfck/file/6629178161.pdf>
- [fop tutorial pdf](#)
- <http://ersatzmonitor.de/userfiles/file/e1401a44-cb76-42f8-b1f3-7c262d527ce4.pdf>